



# College of Public Policy

Prospectus 2023/2024

كلية السياسات العامة  
College of Public Policy

جامعة حمد بن خليفة  
HAMAD BIN KHALIFA UNIVERSITY

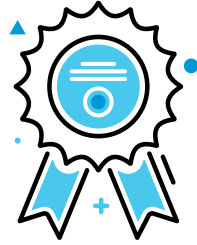


# Table of Contents

|                                |    |
|--------------------------------|----|
| About HBKU                     | 3  |
| About College of Public Policy | 11 |
| Programs                       | 19 |
| Admissions                     | 25 |
| Tuition and Student Funding    | 28 |
| Contact Information            | 30 |

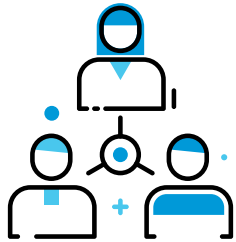


# About HBKU



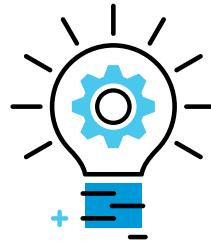
## Excellence

Recognition of Quality  
through Excellence



## People

Shaping Society



## Innovation

Leading Transformation



## Partners

Success through Synergy

About HBKU

# Innovating Today, Shaping Tomorrow

Hamad Bin Khalifa University (HBKU), a member of Qatar Foundation for Education, Science, and Community Development (QF), was founded in 2010 to continue fulfilling QF's vision of unlocking human potential.

HBKU is a homegrown research and graduate studies university that acts as a catalyst for positive transformation in Qatar and the region while having a global impact.

Located within Education City, HBKU seeks to provide unparalleled opportunities where inquiry and discovery are integral to teaching and learning at all levels, utilizing a multidisciplinary approach across its focus areas.

The university provides an array of graduate programs through its College of Islamic Studies, College of Humanities and Social Sciences, College of Science and Engineering, College of Law, College of Health and Life Sciences, and College of Public Policy.

HBKU is also home to three research institutes – Qatar Biomedical Research Institute (QBRI), Qatar Computing Research Institute (QCRI), and Qatar Environment and Energy Research Institute (QEERI) – which together with the colleges are at the forefront of efforts to seek novel solutions to grand challenges facing Qatar and the region.

Additionally, HBKU's Executive Education Center delivers customized programs for the business community of Qatar and the region.



## Why Study at HBKU?

“As a student at HBKU, you have the opportunity to play a key role at an institution which, at its heart, is committed to innovating today and shaping tomorrow.”

At Hamad Bin Khalifa University, our people are our greatest strength, and when students enroll in one of our academic programs, they become part of a thriving community that is committed to the pursuit of excellence and innovation. HBKU has a mandate to build and cultivate human capacity by offering students an enriching academic experience that extends beyond the classroom. By utilizing unique collaborations with local and international partners, we aim to tackle the challenges of the region and the world through interdisciplinary education and innovative research.

HBKU is proud to offer students the opportunity to learn from world-renowned faculty and industry leaders through our colleges and our three national research institutes, providing the knowledge, skills and experience necessary to become experts in

their chosen fields, and take their careers to the next level. HBKU is situated in a regional economic and cultural hub, and our students benefit greatly from exposure to diverse perspectives as they determine how to use their degrees to positively contribute to their own development and that of their communities, whether in Qatar or across the world.

Additionally, HBKU benefits from an exceptional student-to-faculty ratio and from being based in Education City – a unique hub of learning that offers students a wealth of opportunities to play an active role in a vibrant multicultural environment.

As a student at HBKU, you have the opportunity to play a key role at an institution that, at its heart, is committed to innovating today and shaping tomorrow.






About HBKU

## Research

Research is the cornerstone of Hamad Bin Khalifa University's commitment to building human capacity through interdisciplinary education and innovation that supports Qatar's journey towards sustainable growth. HBKU's interdisciplinary research and education environment is distinguished by a unique synergy among the colleges and research institutes.

The university's students, faculty, and researchers work within an ecosystem that addresses challenges of national priority and contributes to outcomes with a tangible impact on society. Collectively, they are achieving breakthroughs in the fields of biomedicine, genomics and precision medicine, information and communications technology and sustainability, while advancing knowledge across the humanities, Islamic studies, law, and public policy.

At each of the six colleges, students work under the guidance of faculty to conduct research that results in tangible solutions and innovative outcomes.



# About College of Public Policy





# College Overview

The College of Public Policy (CPP) is the HBKU's newest college and reflects the priority the university places on supporting and contributing to effective policy development towards implementing the Qatar National Vision 2030.

CPP is a unique and exciting environment, with cutting edge research on policy challenges that face Qatar, the region, and the world. It aims to be one of the leading public policy schools in the region and the world, acting as a bridge and a hub for innovative policy solutions across a range of issues.

## Research Programs

### **PROSPER (Program for Social Policy Evaluation and Research)**

- ▶ Engage students and stakeholders through learning and teaching experiences covering social policy analysis and evaluation.
- ▶ Bridge gaps between academia, policymakers, and practitioners, and prepare the next generation of social policy and evaluation professionals.

### **PROGRESS (Program on Governance, Resilience and Sustainability)**

- ▶ Develop interdisciplinary, integrated and policy-relevant research and analysis concerning the grand challenges identified by the United Nations Sustainable Development Goals (SDGs).
- ▶ Create a vibrant global community of public policy researchers, analysts, and fellows.

## Academic Programs

- ▶ Master of Public Policy (MPP)
- ▶ Master of Social Policy and Program Evaluation (MSPPE)



# Students

Students enrolled in the Master of Public Policy (MPP) program develop a solid core of theoretical knowledge and have the opportunity to specialize in either social policy or in energy and environmental policy. The specializations are supported by advanced seminars and labs, and culminate in a team-based, client-driven capstone project that addresses a real-world problem.

Graduates of the MPP program will be suited to senior roles in government and multinational corporations in Qatar and beyond. They will also be well equipped to serve in the non-profit and policy research sectors.

CPP values diversity of backgrounds and experiences, and aims to build a rich culture and community with a student body that hails from the region and the rest of the world.

# Faculty

The College of Public Policy (CPP) has highly qualified faculty with strong track records in policy research and public management. The college also emphasizes effective and engaged teaching and a rich experience for its students. Faculty are conducting research on sustainable development, global governance, international migration, science policy, family policy and demographic change in Qatar and the MENA region, energy economics, trade, food security, and values and ethics as foundations for public policy.

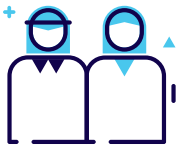


# At a Glance



2 Programs

Master of Public Policy (MPP)  
Master of Social Policy and Program Evaluation (MSPPE)



49 Students

Qatari Students (39%)



70 Nationalities

across HBKU



25 Alumni



# Programs

# Master of Public Policy (MPP)

The Master of Public Policy (MPP) is a full-time two-year degree offered by the College of Public Policy. The program features a distinctive combination of interdisciplinarity, strong ethical foundations, entrepreneurship in public management, and innovation in policy making and design.

The MPP provides training to graduate students from a range of disciplines in the skills needed to understand and enrich policy making in Qatar and the region. The program will offer world-class academic and professional training in public policy analysis, design, implementation, evaluation, and management, as well as specializations in social policy, and in energy and the environment.

## Program Focus

The MPP program builds on the four pillars of public policy: politics, economics, public management ethics, and research methodology. It is designed to integrate analysis, research, and the practical application of knowledge, from an interdisciplinary perspective. Other distinctive features include a strong focus on ethics in the program design and on real-world experiences. The specializations will complement and deepen the core training, and encourage students to work with clients in addressing current policy challenges. The program's ambition is to create thinkers who can do, and doers who can think.

### Graduates of this program will be equipped to:

- ▶ Engage with themes and ideas that cut across disciplines, with an emphasis on the design, implementation, and evaluation of public policy in context, particularly in areas in which there are pressing societal needs.
- ▶ Undertake various methods of research; and produce and test case studies at the frontier of public policy and the social sciences.

- ▶ Demonstrate expertise in multiple fields within public policy and the social sciences, including the theory, methodology, and understanding of public policy implementation processes.
- ▶ Acquire knowledge of the approaches for advancing research towards having a social impact and producing original interdisciplinary research and case studies.

## Curriculum

**A 36-credit program taught in English over two years that includes:**

### Eight core courses (24 credits)

- ▶ Policy Analysis and Design
- ▶ Economics for Public Policy
- ▶ Ethics, Law, and Public Policy
- ▶ Research Methods for Public Policy
- ▶ Public Management: Innovations and Challenges
- ▶ Global Political Economy
- ▶ Comparative Public Policy
- ▶ Analytical Methods for Policy Evaluation

### Specialization in one of two areas (6 credits)

- ▶ Social Policy (Education, Family and Health)
- ▶ Sustainability and Climate Policy

### MPP Capstone Project (6 credits)

- ▶ In consultation with a faculty advisor and a client organization, students (working in small teams) will be required to develop a capstone project within one of the two designated specializations. The chosen case will be relevant for Qatar, the Middle East, or the world. The capstone project concludes with presentations and a policy brief.

### Up to five zero-credit courses will allow students to further develop their communication, analytical, and organizational skills in:

- ▶ Written and Oral Communication
- ▶ Leadership
- ▶ Negotiation
- ▶ Data Management



# Master of Social Policy and Program Evaluation (MSPPE)

The Master of Social Policy and Program Evaluation (MSPPE) is a full-time two-year degree offered by the College of Public Policy at HBKU. The program provides advanced analytic and substantive knowledge of social policy and program evaluation to educate professionals for careers in the public, private, and non-profit sectors on issues of local and global importance.

The program also supports Qatar’s national development by providing evidence-based and ethically informed social policies, supporting policy and program evaluation and building national capacity in social policy and evaluation.

Supported by the Program for Social Policy Evaluation and Research (PROSPER) at CPP, the MSPPE offers students a unique opportunity to develop the evaluation skills needed to inform programs and policies with reliable evidence, support communities and drive organizational change across a range of sectors and activities. The program aims to prepare graduates to shape the strategic direction of social policy and program evaluation in Qatar and beyond.

## Program Focus

The MSPPE will offer a combination of theory, social policy analysis, and policy research and evaluation methods courses using a variety of analytical methods, as well as the opportunity to gain real-world, practical experience. Since the objective of social policy is ultimately human and societal well-being, students will be challenged to reflect on and assess the ethical foundations of social policy interventions. This interdisciplinary degree will draw from multiple fields of study, including economics, political science, sociology, psychology, education, law, applied ethics, and public health. Classroom learning for the MSPPE will be supplemented by applied social policy and evaluation research through public policy lab and internship opportunities.

## Graduates of this program will be equipped to:

- ▶ Function effectively as leading practitioners or senior managers, policy makers, policy analysts, and policy and program evaluators in government, private sector, NGOs and international organizations, designing, improving, leading and implementing efficient social policies.

- ▶ Provide solutions to social problems that account for economic, ethical, and societal considerations as well as professional standards, by applying acquired social policy knowledge.
- ▶ Apply their broad social policy and program evaluation education to effectively evaluate policies and programs to improve outcomes and impact.
- ▶ Acquire knowledge of the approaches for advancing research towards having a social impact and producing original interdisciplinary research and case studies.

## Curriculum

**A 36-credit program taught in English over two years that includes:**

### Two foundation courses (6 credits)

- ▶ Foundations of Social Policy
- ▶ Foundations of Evaluation

### Two core courses (6 credits)

- ▶ Social Policy Analysis
- ▶ Research Methods

There are two distinct concentrations that enable students to focus on social policy or program evaluation. In addition to the core courses students will take courses from the following two concentrations:

### Concentration in Social Policy (9 credits)

- ▶ Welfare of Children and Families
- ▶ Health Policy
- ▶ Education Policy

OR

### Concentration in Program Evaluation (9 credits)

- ▶ Advanced Methods for Program Evaluation
- ▶ Benefit-Cost Analysis for Program Evaluation
- ▶ Program Evaluation Planning and Designs

### Two elective courses (6 credits)

- ▶ Big Data Analytics
- ▶ Law and Social Policy
- ▶ Gender and Social Policy
- ▶ Evaluation of Sustainable Development Goals

### Thesis (9 credits)

All students are required to complete a master’s thesis worth 6 credits. All theses must address an appropriate research topic relevant for Qatar, the Middle East, or globally, which includes a defined field of research and a number of researchable questions to investigate. Theses should demonstrate a good knowledge of the literature in the field of social policy or program evaluation; contribute to the study of the field through original research and/or by relating the subject studies to the broader academic literature; and demonstrate analytic ability through the careful and critical use of relevant concepts and approaches.

The background features a large, light blue rectangle on the right side, which contains the word "Admissions". To the left of this rectangle, there is a dark blue triangle pointing towards the top-left corner, and a medium blue triangle pointing towards the bottom-left corner. These two triangles overlap each other and the light blue rectangle.

# Admissions

# Admission Requirements

Applicants seeking admission to the Master of Public Policy should have a bachelor's degree with a strong academic record (minimum 3.0 GPA out of 4.0) from a recognized university. Applicants from all fields are welcome to apply, including engineering, natural sciences, and humanities, but preference will be given to those with an academic background in political science, public administration, economics, communications, or other social sciences.

Applicants seeking admission to the Master of Social Policy and Program Evaluation should have a bachelor's degree with a strong academic record (minimum 3.0 GPA out of 4.0) from a recognized university. Applicants from all fields are welcome to apply, provided they have a strong quantitative background. Applicants with work experience in social policy and/or program evaluation are preferred.

Applicants to the College of Public Policy are required to submit a valid IELTS score of 6.5 or TOEFL score of 79 to demonstrate their proficiency in English.

Further details about the language proficiency requirement and the process to seek exemption (if applicable) are available from [admissions.hbku.edu.qa](https://admissions.hbku.edu.qa)



College of Public Policy

# Application Requirements

## Application:

A completed online application form:  
[admissions.hbku.edu.qa](https://admissions.hbku.edu.qa)

## Academic transcripts:

Official electronic copies of transcripts should be submitted as part of the online application. Final transcripts and graduation statements are required for all previous university studies. All transcripts submitted should include an explanation of the grading system. For those who have not completed their current studies, transcripts must include results from the last completed semester of coursework. Transcripts in languages other than English or Arabic must be accompanied with an official translation. Applicants who are admitted to the program based on copies of or incomplete transcripts will be required to provide original transcripts upon enrollment in order to register for courses.

## Standardized test results:

Official copies (where required) must be sent directly to HBKU. Please refer to the institutional codes below:

- ▶ TOEFL: 4981
- ▶ IELTS: No code required. Students should ask the IELTS center where they tested to send the IELTS TRF to Hamad Bin Khalifa University

Applicants should also submit copies of their test scores with the online application.

## Letters of recommendation:

Applicants should submit two letters of recommendation, one of which must be from an academic referee.

Please visit [admissions.hbku.edu.qa](https://admissions.hbku.edu.qa) for further information about the submission process.

## Personal statement of interest:

Applicants should submit a personal statement (300-500 words) as part of the online application. The statement should explain why the candidate is applying to the program, and how their studies will contribute to the achievement of their personal objectives, including information about the applicant's research interests and achievements

## Resume/curriculum vitae:

Applicants should submit a copy of their current resume or curriculum vitae as part of the online application.

## Identification document:

All applicants should submit an electronic copy of their passport as part of the online application. Nationals and residents of Qatar should also submit their valid Qatari ID.

# Tuition and Student Funding

The College of Public Policy provides a limited number of tuition waivers on a competitive basis.

| Program   | Total Program<br>Tuition Fees | Tuition Fees<br>per Credit Hour | Total Program<br>Credit Hours | Program<br>Duration |
|---|-------------------------------|---------------------------------|-------------------------------|---------------------|
| Master of Public Policy                           | QAR 110,000                   | QAR 3,065                       | 36                            | 2 years             |
| Master of Social Policy<br>and Program Evaluation | QAR 110,000                   | QAR 3,065                       | 36                            | 2 years             |





# Contact Information

**cpp.hbku.edu.qa**

## **Admission inquiries:**

admissions.cpp@hbku.edu.qa

## **General inquiries:**

cpp@hbku.edu.qa

**P.O. Box: 34110**

Doha – Qatar



HBKU



HBKU



Hamad Bin Khalifa University



Hamad Bin Khalifa University



Hamad Bin Khalifa University

